

# Hail Solution

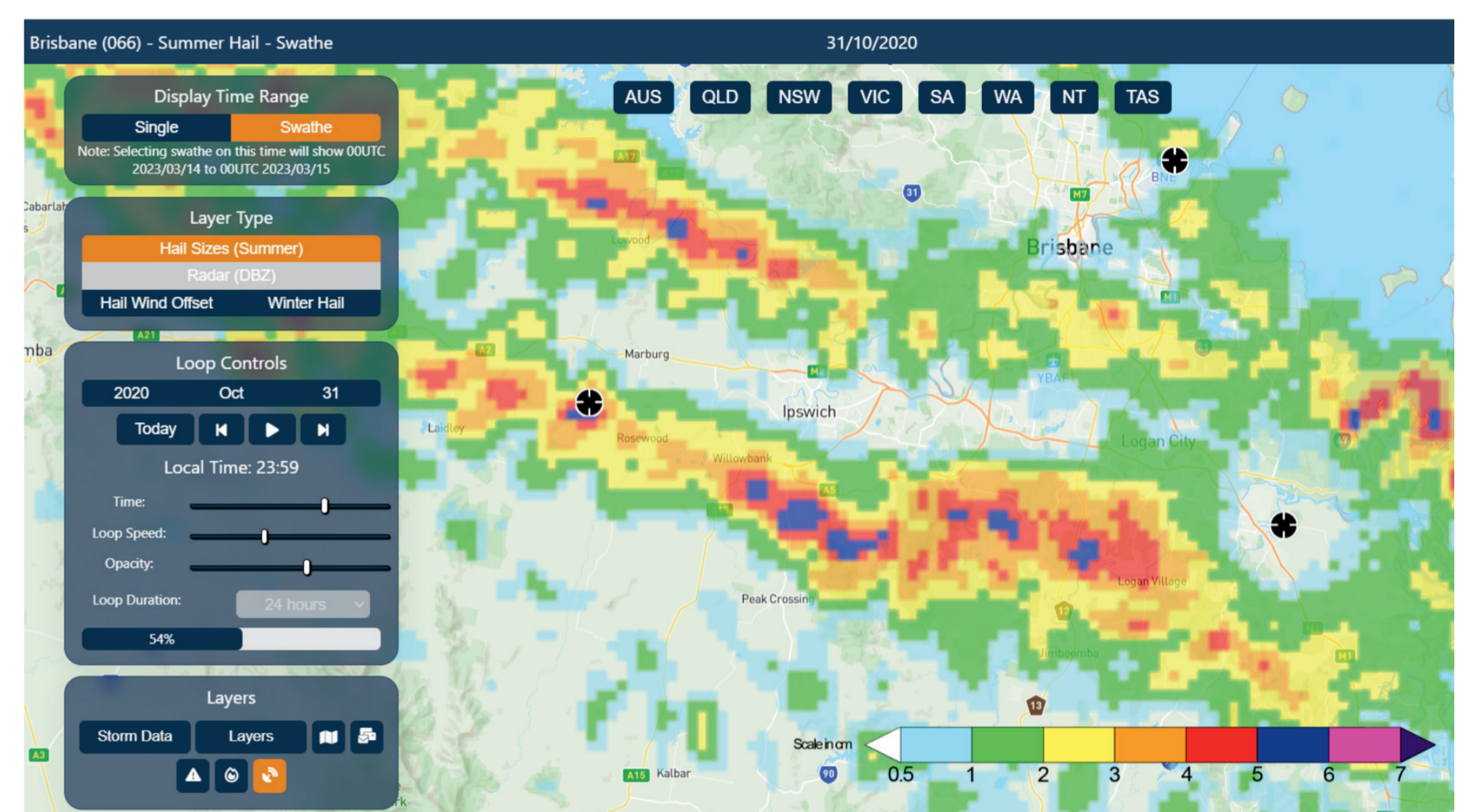
**Prepare your Operations Teams and reduce claim costs with unmatched warning and prevention data through Early Warning Network's comprehensive Hail Solution.**

With decades of experience in severe weather backed by leading technology, Early Warning Network (EWN) provides the most comprehensive hail product suite in Australia, designed to mitigate risk, protect assets, and optimise claims management for the insurance industry.

Our innovative hail solution offers a robust suite of tools to effectively mitigate risk, protect assets, and optimise claims management. Backed by market-leading technology and supported by our team of expert meteorologists, you can proactively safeguard your insured properties and enhance your overall risk management strategies.

## Hail Solution Key Features

- Mitigate business risk by utilising timely, accurate forecast data for hail events
- Schedule your Claims Teams rostering & call centre staff & proactively prepare your Operations Teams on the ground in key impact areas
- Proactively advise policy holders in key impact areas to prepare for incoming hail and move vehicles undercover
- Assess potential areas of damage with real-time hail size and tracking, and arm your teams with accurate data for customer claims
- Replay historic hail events and hail size observed to further prepare for any future severe weather
- Validate claims effectively, with detailed and accurate report data, and leverage information to refine underwriting practices and enhance risk assessment models
- Receive 24/7 support from our in-house team of Meteorologists, 365 days a year



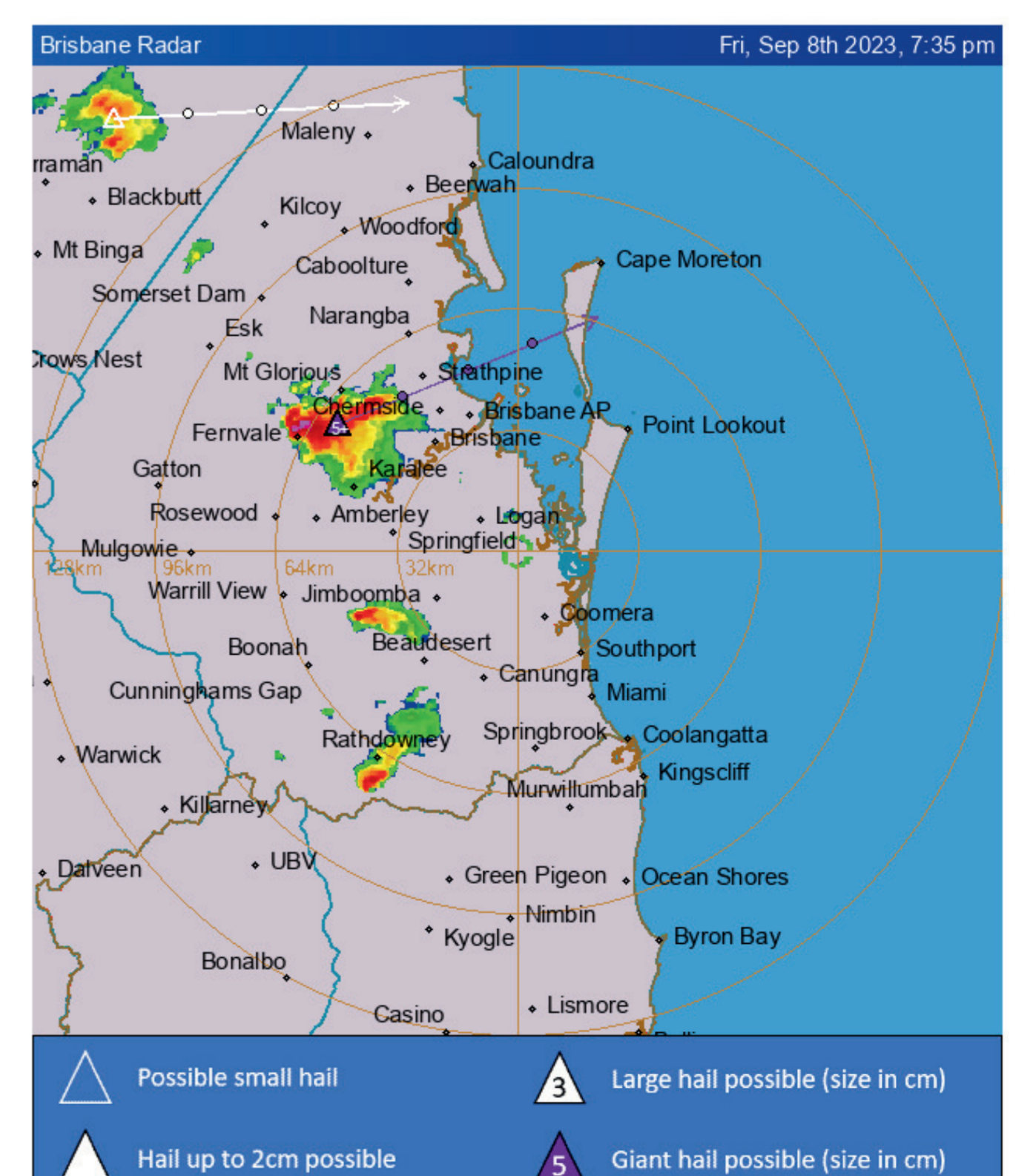
HailTracker Halloween hail event, 31 Oct 2020:  
Size of hail observed in cm

### Fri 08 Sep QLD Hail Alert

Fri 08 Sep 23 19:43:30 (11 days ago)

Issued: 19:42 Friday, 8 September

QLD Large hail has been detected on Brisbane radar near Samford, Samsonvale.



Sample Hail Alert issued 8 September 2023

# Advanced Hail Technology

## Hail Forecasting

Receive detailed hail forecasts direct to your team, produced by our specialised Severe Weather Meteorologists. These geospatially-targeted forecasts provide you with up to 4 days notice of impending hail and severe weather threats, allowing you to advise customers and prepare operations prior to any potential damaging hail event. We highlight potential hail sizes expected from storms in those areas to assist your operations in taking necessary precautions to minimise hail damage, giving you a competitive advantage through proactive risk assessment.

## Live Hail Alerting

With Australia-first hail algorithms and powered by 3D technology, EWN Live Hail Alerts provide timely & proactive hail alerts to prepare your staff and protect your customers. Our team advise when hail 2cm or larger is detected inside a thunderstorm, its estimated size, storm direction and locations soon to be affected, issuing immediate alerts to the areas in the path of the approaching storm only if the detected hail size is above 2cm, when it becomes damaging to property and motor vehicles, thereby reducing alert fatigue and increasing credibility.

## HailTracker

HailTracker allows you to monitor hail events in real time or review historic hail events up to 13 years in the past for certain radars, down to street level.

Providing your business with precise and real-time hail tracking data, HailTracker assists in accurately assessing and verifying claims related to hail damage. It will help your teams validate the occurrence of hail in specific areas, verify the extent of damage reported by policyholders, and streamline the claims settlement process. This accuracy in claims assessment facilitates fair and prompt resolution, reducing fraud risks and ensuring proper indemnification for policyholders.

## Post-Event Reporting

EWN provide rapid post-event hail reporting for populated regions which have received hail larger than 2cm. These reports offer comprehensive insights including initial forecasting data, locations impacted and hail sizes recorded in affected areas, providing you with critical information for timely action by Post Hail Event Assessors, claims verification, accurate damage assessment, risk analysis, and fraud detection. It enables efficient claims processing, informed decision-making, and proactive loss prevention, ultimately contributing to improved operations, customer satisfaction, and profitability.